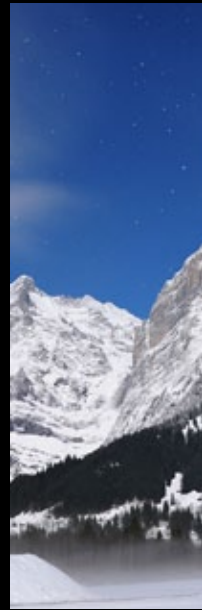
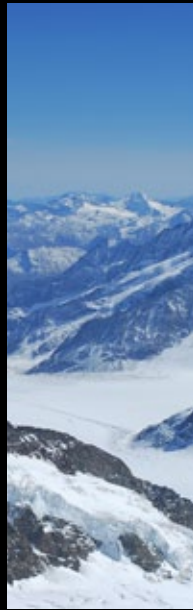


SWISS MADE  **JOWISSA**
Swiss Quality Watches Since 1951



Catalogue 2011

www.jowissa.ch

This catalogue shows only a part of our collection.
Visit our website to see over 300 different models.

Catalogue

Since the inception in 1951, JOWISSA's principal aim has been to produce interesting Swiss Made watches at an attractive price level. This focus resulted in the creation of watches of high quality in combination with aesthetic designs. JOWISSA timepieces are reliable for daily wear while at the same time allow owners with sensitivity for style and fashion to emphasize their individuality.



Facet

The combination of curves and light reflecting edges gives the watches in this section a special design note and makes each model an outstanding accessory and piece of jewelry. Fashion-conscious individuals appreciate the high recognition value of our collection.





J1.166.L - Soletta

39 mm | Stainless Steel Case with Tungsten Bezel | Sapphire Crystal | Tungsten Band | Calendar | Mechanical Movement with Automatic Winding | Water Resistant 3 ATM



J1.167.L - Soletta

39 mm | Stainless Steel Case with Tungsten Bezel | Sapphire Crystal | Tungsten Band | Calendar | Mechanical Movement with Automatic Winding | Water Resistant 3 ATM



J1.175.L - Soletta

39 mm | Stainless Steel Case with Tungsten Bezel | Sapphire Crystal | Tungsten Band | Calendar | Quartz Movement | Water Resistant



J1.177.M - Soletta

32 mm | Stainless Steel Case with Tungsten Bezel | Sapphire Crystal | Mother-of-Pearl Dial with Stones | Tungsten Band | Calendar | Quartz Movement | Water Resistant 3 ATM



J1.178.M - Soletta

D32 mm | Stainless Steel Case with Tungsten Bezel | Sapphire Crystal | Mother-of-Pearl Dial with Stones | Tungsten Band | Calendar | Quartz Movement | Water Resistant 3 ATM



J1.179.M - Soletta

32 mm | Stainless Steel Case with Tungsten Bezel | Sapphire Crystal | Mother-of-Pearl Dial with Stones | Tungsten Band | Calendar | Quartz Movement | Water Resistant 3 ATM



J1.017.M - Safira 99

29 mm | Stainless Steel Case | Sapphire Crystal with Diamond Cut | Dial with Stones | Genuine Leather Strap with Alligator Top | Quartz Movement | Water Resistant 3 ATM



J1.020.M - Safira 99

29 mm | Stainless Steel Case | Sapphire Crystal with Diamond Cut | Dial with Stones | Ceramic Band | Quartz Movement | Water Resistant 3 ATM



J1.023.M - Safira 99

29 mm | Stainless Steel Case | Sapphire Crystal with Diamond Cut | Dial with Stones | Genuine Leather Strap with Alligator Top | Quartz Movement | Water Resistant 3 ATM



J1.001.L - Safira 99

32 mm | Stainless Steel Case | Sapphire Crystal
with Diamond Cut | Mother-of-Pearl Dial |
Genuine Leather Strap with Alligator Top | Quartz
Movement | Water Resistant 3 ATM



J1.002.M - Safira 99

29 mm | Stainless Steel Case | Sapphire
Crystal with Diamond Cut | Mother-of-Pearl
Dial | Ceramic band | Quartz Movement | Water
Resistant 3 ATM



J1.009.M - Safira 99

29 mm | Stainless Steel Case | Sapphire Crystal
with Diamond Cut | Mother-of-Pearl Dial with
Stones | Ceramic band | Quartz Movement |
Water Resistant 3 ATM

Swiss
**Quality
Watches**
since 1951





J1.056.L - Safira 24

32 mm | Stainless Steel Case | Sapphire Crystal
with Diamond Cut | Genuine Leather Strap
with Alligator Top | Quartz Movement | Water
Resistant 3 ATM



J1.063.L Safira 999

32 mm | Stainless Steel Case | Sapphire Crystal
with Diamond Cut | Mother-of-Pearl Dial with
Stones | Genuine Leather Strap with Alligator
Top | Quartz Movement | Water Resistant 3 ATM



J1.161.L - Safira 99

32 mm | Stainless Steel Case | Sapphire Crystal
with Diamond Cut | Mother-of-Pearl Dial with
Stones | Genuine Leather Strap with Alligator
Top | Quartz Movement | Water Resistant 3 ATM



J1.182.XL - Safira 99

39 mm | Stainless Steel Case | Sapphire Crystal with Diamond Cut | Mother-of-Pearl Dial with Stones | Genuine Leather Strap with Alligator Top | Calendar | Quartz Movement | Water Resistant 3 ATM



J1.184.XL - Safira 99

39 mm | Stainless Steel Case | Sapphire Crystal with Diamond Cut | Genuine Leather Strap with Alligator Top | Calendar | Quartz Movement | Water Resistant 3 ATM



J1.186.XL - Safira 99

39 mm | Stainless Steel Case | Sapphire Crystal with Diamond Cut | Genuine Leather Strap with Alligator Top | Calendar | Quartz Movement | Water Resistant 3 ATM



J5.125.M - Luca

29 mm | Stainless Steel Case | Tempered Mineral Glass with Star Cut | Mother-of-Pearl Dial | Genuine Leather Strap with Alligator Top | Quartz Movement | Water Resistant 3 ATM



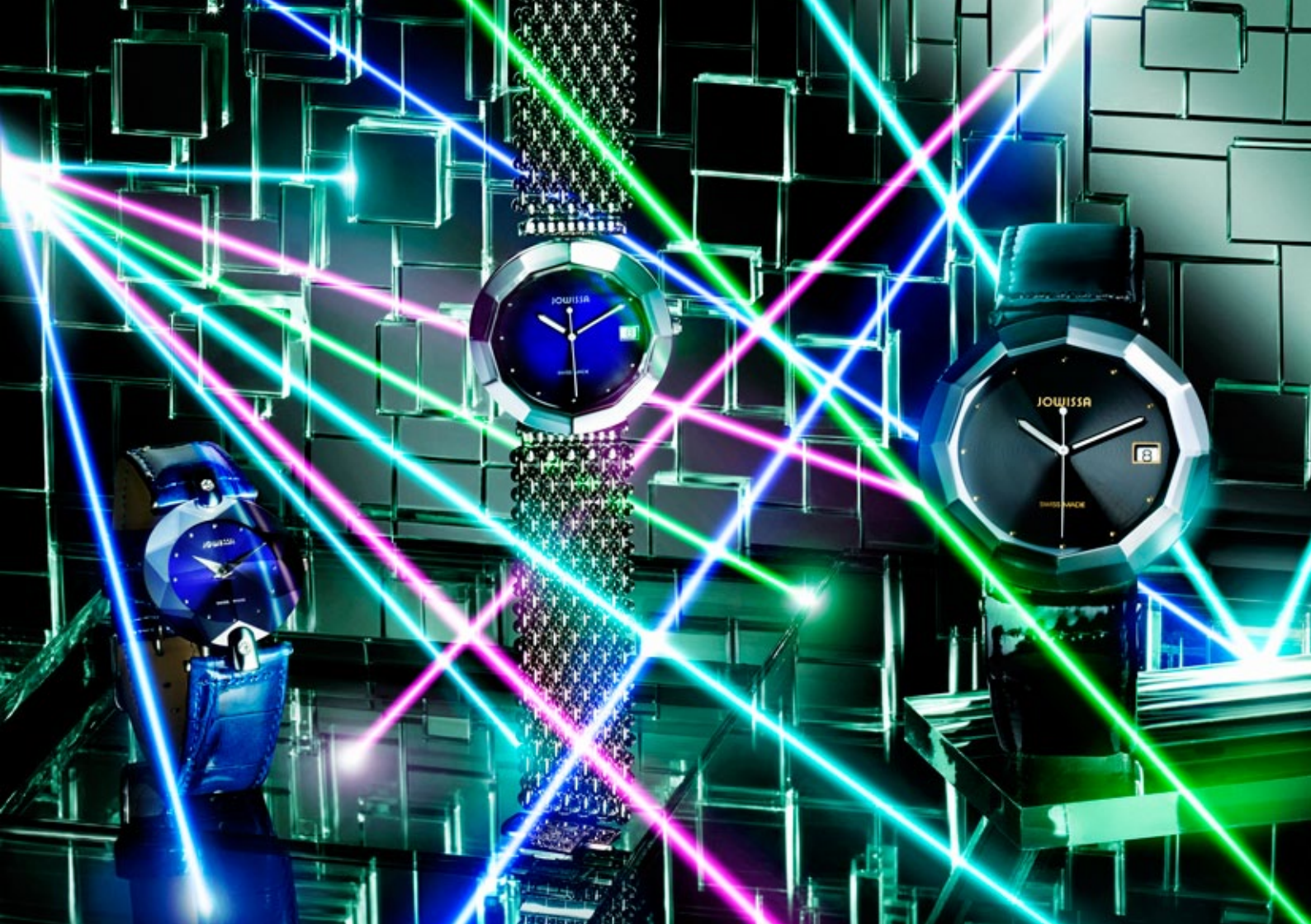
J5.121.M - Luca

29 mm | Stainless Steel Case | Tempered Mineral Glass with Star Cut | Genuine Leather Strap with Alligator Top | Quartz Movement | Water Resistant 3 ATM



J5.002.M - Luca

29 mm | Stainless Steel Case | Tempered Mineral Glass with Star Cut | Stainless Steel Band | Quartz Movement | Water Resistant 3 ATM





J5.013.M - Facet Strass

29 mm | Stainless Steel Case | Tempered Mineral Glass with Star Cut | Genuine Leather Strap with Alligator Top | Quartz Movement | Water Resistant 3 ATM



J5.015.M - Facet Strass

29 mm | Stainless Steel Case | Tempered Mineral Glass with Star Cut | Genuine Leather Strap with Alligator Top | Quartz Movement | Water Resistant 3 ATM



J5.008.M - Facet Strass

29 mm | Stainless Steel Case | Tempered Mineral Glass with Star Cut | Stainless Steel Band | Quartz Movement | Water Resistant 3 ATM





J5.005.M - Facet
 29 mm | Stainless Steel Case | Tempered Mineral Glass with Star Cut | Genuine Leather Strap with Lizard Top | Quartz Movement | Water Resistant 3 ATM



J5.094.M - Facet
 29 mm | Stainless Steel Case | Tempered Mineral Glass with Star Cut | Genuine Leather Strap with Alligator Top | Quartz Movement | Water Resistant 3 ATM



J5.091.M - Facet
 29 mm | Stainless Steel Case | Tempered Mineral Glass with Star Cut | Genuine Leather Strap with Alligator Top | Quartz Movement | Water Resistant 3 ATM



J5.115.XL - Pyramid

36 mm | Stainless Steel Case | Tempered Mineral Glass with Pyramid Cut | Genuine Leather Strap with Alligator Top | Quartz Movement | Water Resistant 3 ATM



J5.116.XL - Pyramid

36 mm | Stainless Steel Case | Tempered Mineral Glass with Pyramid Cut | Ceramic Band | Quartz Movement | Water Resistant 3 ATM



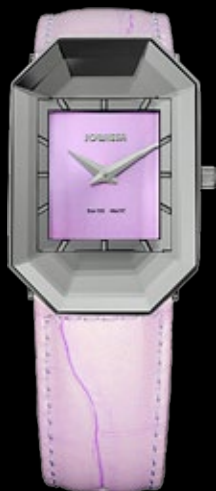
J5.114.XL - Pyramid

36 mm | Stainless Steel Case | Tempered Mineral Glass with Pyramid Cut | Genuine Leather Strap with Alligator Top | Quartz Movement | Water Resistant 3 ATM



J8.012.M - Scala

25 x 37 mm | Stainless Steel Case | Tempered Mineral Glass | Dial with Rhinestone Imprint | Stainless Steel Band | Quartz Movement | Water Resistant 3 ATM



J8.013.M - Scala

25 x 37 mm | Stainless Steel Case | Tempered Mineral Glass | Genuine Leather Strap with Alligator Top | Quartz Movement | Water Resistant 3 ATM



J8.029.M - Scala

25 x 37 mm | Stainless Steel Case | Tempered Mineral Glass | Genuine Leather Strap | Quartz Movement | Water Resistant 3 ATM



J9.003.L - Ceramic Classic
 38 mm | Stainless Steel Case with Ceramic Bezel | Sapphire Crystal with Pyramid Cut | Genuine Leather Strap with Alligator Top | Calendar | Quartz Movement | Water Resistant 3 ATM



J9.013.L - Ceramic Classic
 38 mm | Stainless Steel Case with Ceramic Bezel | Sapphire Crystal with Pyramid Cut | Genuine Leather Strap with Alligator Top | Calendar | Quartz Movement | Water Resistant 3 ATM



J9.004.S - Ceramic Classic
 24 mm | Stainless Steel Case with Ceramic Bezel | Sapphire Crystal with Pyramid Cut | Ceramic band | Quartz Movement | Water Resistant 3 ATM



J9.001.L - Mars
38 mm | Ceramic Case | Sapphire Crystal |
Ceramic Band | Calendar | Quartz Movement |
Water Resistant 5 ATM



J9.002.L - Venus
38 mm | Ceramic Case | Sapphire Crystal |
Mother-of-Pearl Dial | Ceramic Band | Calendar |
Quartz Movement | Water Resistant 5 ATM



J9.010.L - Venus
38 mm | Ceramic Case | Sapphire Crystal |
Mother-of-Pearl Dial with Stones | Ceramic
Band | Calendar | Quartz Movement | Water
Resistant 5 ATM





Classic

This collection embodies a fusion of flatness, classic elegant designs and exciting modern colors, produced with top quality materials. The watches are jewelry for individualism to proud owners which admire style and fashion.





J4.001.L - Opera
 40 mm | Stainless Steel Case | Sapphire Crystal
 | Genuine Leather Strap with Alligator Top |
 Quartz Movement | Water Resistant 3 ATM



J4.002.L - Opera
 40 mm | Stainless Steel Case | Sapphire Crystal
 | Genuine Leather Strap with Alligator Top |
 Quartz Movement | Water Resistant 3 ATM



J4.004.L - Opera
 40 mm | Stainless Steel Case | Sapphire Crystal
 | Genuine Leather Strap with Lizard Top | Quartz
 Movement | Water Resistant 3 ATM



J4.006.L - Romeo

43 mm | Stainless Steel Case | Sapphire Crystal
| Genuine Leather Strap with Alligator Top | Ca-
lendar | Mechanical Movement with Automatic
Winding | Water Resistant 5 ATM



J4.007.L - Romeo

43 mm | Stainless Steel Case | Sapphire Crystal
| Genuine Leather Strap with Alligator Top | Ca-
lendar | Mechanical Movement with Automatic
Winding | Water Resistant 5 ATM



J4.051.L - Nero

43 mm | Stainless Steel Case | Sapphire Crystal
| Stainless Steel Band | Calendar | Mechanical
Movement with Automatic Winding | Water
Resistant 5 ATM





J4.010.M - Genua

36 mm | Stainless Steel Case | Tempered Mineral Glass | Genuine Leather Strap with Alligator Top | Quartz Movement | Water Resistant 3 ATM



J4.011.M - Genua

36 mm | Stainless Steel Case | Tempered Mineral Glass | Genuine Leather Strap with Alligator Top | Quartz Movement | Water Resistant 3 ATM



J4.047.M - Genua

36 mm | Stainless Steel Case | Tempered Mineral Glass | Genuine Leather Strap with Alligator Top | Quartz Movement | Water Resistant 3 ATM



J4.060.L - Monte Carlo
 40 mm | Stainless Steel Case | Sapphire Crystal
 | Genuine Leather Strap with Alligator Top | Calendar | Mechanical Movement with Automatic Winding | Water Resistant 3 ATM



J4.061.L - Monte Carlo
 40 mm | Stainless Steel Case | Sapphire Crystal
 | Genuine Leather Strap with Alligator Top | Calendar | Mechanical Movement with Automatic Winding | Water Resistant 3 ATM



J4.061.M - Monte Carlo
 29 mm | Stainless Steel Case | Sapphire Crystal
 | Genuine Leather Strap with Alligator Top | Calendar | Mechanical Movement with Automatic Winding | Water Resistant 3 ATM



J4.053.L - Monte Carlo
40 mm | Stainless Steel Case | Sapphire Crystal
| Genuine Leather Strap with Alligator Top | Calendar | Mechanical Movement with Automatic Winding | Water Resistant 3 ATM



J4.054.L - Monte Carlo
40 mm | Stainless Steel Case | Sapphire Crystal
| Genuine Leather Strap with Alligator Top | Calendar | Mechanical Movement with Automatic Winding | Water Resistant 3 ATM



J4.055.L - Monte Carlo
40 mm | Stainless Steel Case | Sapphire Crystal
| Genuine Leather Strap with Alligator Top | Calendar | Mechanical Movement with Automatic Winding | Water Resistant 3 ATM



J4.056.M - Monte Carlo

29 mm | Stainless Steel Case | Sapphire Crystal
| Mother-of-Pearl Dial with Stones | Genuine
Leather Strap with Alligator Top | Calendar |
Mechanical Movement with Automatic Winding |
Water Resistant 3 ATM



J4.057.M - Monte Carlo

29 mm | Stainless Steel Case | Sapphire Crystal
| Mother-of-Pearl Dial with Stones | Genuine
Leather Strap with Alligator Top | Calendar |
Mechanical Movement with Automatic Winding |
Water Resistant 3 ATM



J4.058.M - Monte Carlo

29 mm | Stainless Steel Case | Sapphire Crystal
| Mother-of-Pearl Dial with Stones | Genuine
Leather Strap with Alligator Top | Calendar |
Mechanical Movement with Automatic Winding |
Water Resistant 3 ATM



J2.048.L - Strada

35 mm | Stainless Steel Case | Tempered Mineral Glass | Stainless Steel Band | Calendar | Quartz Movement | Water Resistant 3 ATM



J2.049.L - Strada

35 mm | Stainless Steel Case | Tempered Mineral Glass | Genuine Leather Strap with Alligator Top | Calendar | Quartz Movement | Water Resistant 3 ATM



J2.055.L - Strada

35 mm | Stainless Steel Case | Tempered Mineral Glass | Genuine Leather Strap with Alligator Top | Calendar | Quartz Movement | Water Resistant 3 ATM





J2.064.M - Roma MoL
 31 mm | Stainless Steel Case | Sapphire Crystal
 | Mother-of-Pearl Dial | Satin Strap | Quartz
 Movement | Water Resistant 3 ATM



J2.066.M - Roma MoL
 31 mm | Stainless Steel Case | Sapphire Crystal |
 Genuine Leather Strap with Alligator Top | Quartz
 Movement | Water Resistant 3 ATM



J2.067.M - Roma MoL
 31 mm | Stainless Steel Case | Sapphire Crystal
 | Genuine Leather Strap with Alligator Top |
 Quartz Movement | Water Resistant 3 ATM



J2.080.M - Roma MoL
 31 mm | Stainless Steel Case | Sapphire Crystal
 | Mother-of-Pearl Dial | Stainless Steel Band |
 Quartz Movement | Water Resistant 3 ATM



J2.056.M - Roma MoL
 31 mm | Stainless Steel Case | Sapphire Crystal
 | Genuine Leather Strap with Alligator Top |
 Quartz Movement | Water Resistant 3 ATM



J2.057.M - Roma MoL
 31 mm | Stainless Steel Case | Sapphire Crystal
 | Genuine Leather Strap with Alligator Top |
 Quartz Movement | Water Resistant 3 ATM



J2.027.M - Roma

31 mm | Stainless Steel Case | Tempered Mineral Glass | Genuine Leather Strap with Alligator Top | Quartz Movement | Water Resistant 3 ATM



J2.028.M - Roma

31 mm | Stainless Steel Case | Tempered Mineral Glass | Genuine Leather Strap with Alligator Top | Quartz Movement | Water Resistant 3 ATM



J2.029.M - Roma

31 mm | Stainless Steel Case | Tempered Mineral Glass | Stainless Steel Band | Quartz Movement | Water Resistant 3 ATM



J2.041.M - Roma

31 mm | Stainless Steel Case | Tempered Mineral Glass | Genuine Leather Strap with Alligator Top | Quartz Movement | Water Resistant 3 ATM



J2.043.M - Roma

31 mm | Stainless Steel Case | Tempered Mineral Glass | Genuine Leather Strap with Alligator Top | Quartz Movement | Water Resistant 3 ATM



J2.045.M - Roma

31 mm | Stainless Steel Case | Tempered Mineral Glass | Genuine Leather Strap with Alligator Top | Quartz Movement | Water Resistant 3 ATM



J2.014.M - Roma Pastell
31 mm | Stainless Steel Case | Tempered Mineral Glass | Genuine Leather Strap | Quartz Movement | Water Resistant 3 ATM



J2.016.M - Roma Pastell
31 mm | Stainless Steel Case | Tempered Mineral Glass | Genuine Leather Strap | Quartz Movement | Water Resistant 3 ATM



J2.018.M - Roma Pastell
31 mm | Stainless Steel Case | Tempered Mineral Glass | Genuine Leather Strap with Alligator Top | Quartz Movement | Water Resistant 3 ATM





J2.010.M - Roma Colori

31 mm | Stainless Steel Case | Tempered Mineral Glass | Genuine Leather Strap with Alligator Top | Quartz Movement | Water Resistant 3 ATM



J2.011.M - Roma Colori

31 mm | Stainless Steel Case | Tempered Mineral Glass | Genuine Leather Strap with Alligator Top | Quartz Movement | Water Resistant 3 ATM



J2.012.M - Roma Colori

31 mm | Stainless Steel Case | Tempered Mineral Glass | Genuine Leather Strap with Alligator Top | Quartz Movement | Water Resistant 3 ATM



J2.031.M - Roma Colori
 31 mm | Stainless Steel Case | Tempered Mineral Glass | Genuine Leather Strap with Alligator Top | Quartz Movement | Water Resistant 3 ATM



J2.032.M - Roma Colori
 31 mm | Stainless Steel Case | Tempered Mineral Glass | Genuine Leather Strap with Alligator Top | Quartz Movement | Water Resistant 3 ATM



J2.033.M - Roma Colori
 31 mm | Stainless Steel Case | Tempered Mineral Glass | Genuine Leather Strap with Alligator Top | Quartz Movement | Water Resistant 3 ATM



J2.035.M - Roma Ethno

31 mm | Stainless Steel Case | Tempered Mineral Glass | Genuine Leather Strap with Stitching
| Quartz Movement | Water Resistant 3 ATM



J2.036.M - Roma Ethno

31 mm | Stainless Steel Case | Tempered Mineral Glass | Genuine Leather Strap with Stitching
| Quartz Movement | Water Resistant 3 ATM



J2.037.M - Roma Ethno

31 mm | Stainless Steel Case | Tempered Mineral Glass | Genuine Leather Strap with Stitching
| Quartz Movement | Water Resistant 3 ATM



J3.009.M - Elegance

31 mm | Stainless Steel Case | Tempered Mineral Glass | Genuine Leather Strap with Alligator Top | Quartz Movement | Water Resistant 3 ATM



J3.021.M - Elegance

31 mm | Stainless Steel Case | Tempered Mineral Glass | Genuine Leather Strap with Alligator Top | Quartz Movement | Water Resistant 3 ATM



J3.017.M - Elegance

31 mm | Stainless Steel Case | Tempered Mineral Glass | Stainless Steel Band | Quartz Movement | Water Resistant 3 ATM



J3.011.M - Elegance

31 mm | Stainless Steel Case | Tempered Mineral Glass | Genuine Leather Strap with Alligator Top | Quartz Movement | Water Resistant 3 ATM



J3.002.M - Elegance MoP

31 mm | Stainless Steel Case | Tempered Mineral Glass | Mother-of-Pearl Dial | Genuine Leather Strap with Lizard Top | Quartz Movement | Water Resistant 3 ATM



J3.003.M - Elegance MoP

31 mm | Stainless Steel Case | Tempered Mineral Glass | Mother-of-Pearl Dial | Stainless Steel Band | Quartz Movement | Water Resistant 3 ATM





J6.082.M - Bangle

30 mm | Stainless Steel Case | Tempered
Mineral Glass | Stainless Steel Bangle | Quartz
Movement | Water Resistant 3 ATM

J6.014.M - Bangle

30 mm | Stainless Steel Case | Tempered
Mineral Glass | Stainless Steel Bangle | Quartz
Movement | Water Resistant 3 ATM

J6.081.M - Bangle

30 mm | Stainless Steel Case | Tempered
Mineral Glass | Stainless Steel Bangle | Quartz
Movement | Water Resistant 3 ATM



J8.023.M - Latina
 23 x 29 mm | Stainless Steel Case | Tempered Mineral Glass | Genuine Leather Strap with Lizard Top | Quartz Movement | Water Resistant 3 ATM



J8.024.M - Latina
 23 x 29 mm | Stainless Steel Case | Tempered Mineral Glass | Genuine Leather Strap with Lizard Top | Quartz Movement | Water Resistant 3 ATM



J8.022.M - Latina
 23 x 29 mm | Stainless Steel Case | Tempered Mineral Glass | Genuine Leather Strap with Lizard Top | Quartz Movement | Water Resistant 3 ATM



J7.009.L - Pegasus
 42 mm | Stainless Steel Case | Tempered
 Mineral Glass | Genuine Leather Strap with Al-
 ligator Top | Calendar | Quartz Movement | Water
 Resistant 3 ATM



J7.011.L - Pegasus
 42 mm | Stainless Steel Case | Tempered
 Mineral Glass | Genuine Leather Strap with Al-
 ligator Top | Calendar | Quartz Movement | Water
 Resistant 3 ATM



J7.013.L - Pegasus
 42 mm | Stainless Steel Case | Tempered
 Mineral Glass | Genuine Leather Strap with Al-
 ligator Top | Calendar | Quartz Movement | Water
 Resistant 3 ATM



J4.033.M - Nuoro
 36 mm | Stainless Steel Case | Tempered Mineral Glass | Stainless Steel Band | Quartz Movement | Water Resistant 3 ATM



J4.012.M - Nuoro
 36 mm | Stainless Steel Case | Tempered Mineral Glass | Genuine Leather Strap with Lizard Top | Quartz Movement | Water Resistant 3 ATM



J4.013.M - Nuoro
 36 mm | Stainless Steel Case | Tempered Mineral Glass | Genuine Leather Strap with Lizard Top | Quartz Movement | Water Resistant 3 ATM



J7.040.L - Monte

45 mm | Stainless Steel Case | Sapphire Crystal
| Genuine Leather Strap with Alligator Top | Ca-
lendar | Chronograph | ETA G10.211 Movement |
Water Resistant 5 ATM



J7.002.L - Ginebra

40 mm | Stainless Steel Case | Sapphire Crystal
| Genuine Leather Strap with Alligator Top |
Calendar | Chronograph | Alarm | ETA G10.791
Movement | Water Resistant 5 ATM



J7.008.L - Ginebra

40 mm | Stainless Steel Case | Sapphire Crystal
| Stainless Steel Band | Calendar | Chronograph
| Alarm | ETA G10.791 Movement | Water
Resistant 5 ATM



www.jowissa.ch

This catalogue shows only a part of our collection.
Visit our website to see over 300 different models.

Credits:

Mountain photo: Kentaro Nakai www.k-pics.com

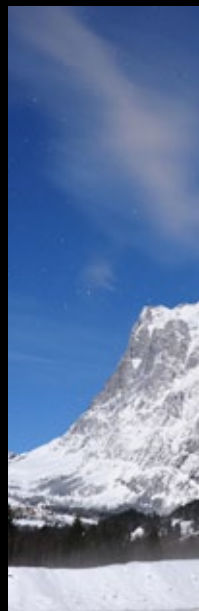
Still life photo: Chris Turner

Creative Director: Anders Modig / Plaza Watch

Graphic design: Peter Ehrlin / Plaza Watch

People photo: Jowissa Team

Watch photo: Jowissa Team



SWISS MADE  **JOWISSA**
Swiss Quality Watches Since 1951

www.jowissa.ch