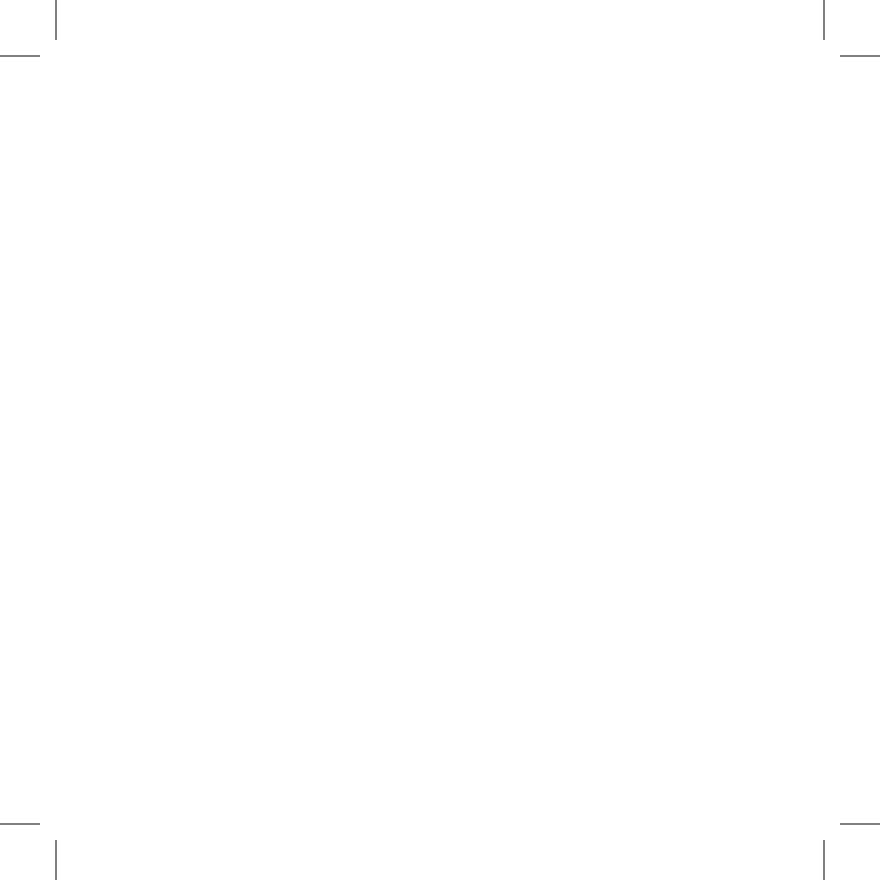


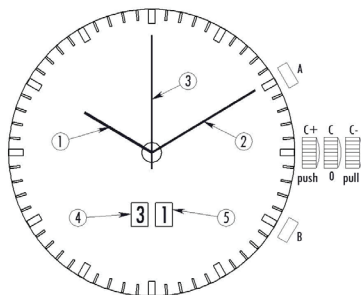
Instruction Manual



Gv2
Montreux



GENERAL DESCRIPTION



BUTTON:

- A : Pusher at 2 o'clock
- B : Pusher at 4 o'clock
- C- : Crown pulled
- C+ : Crown pushed
- C0 : Crown in neutral position

DIAL:

- Central hands: Hour (1)/ Minute (2)/ Second(3)
- 4 o'clock : First digit of date (4) or tenth of the chronograph (left wheel)
- 5 o'clock : Second digit of date (5) or hundredth of the chronograph (right wheel)

MODES

This section describes the two different available modes:

- Local Time
- Chronometer 1/100 of second

Those two different modes are sequentially displayed by pressing the crown (C+).

By default and after a reset (when the battery is replaced), the local time is the first displayed mode.

From this mode is possible to access to the other modes such as indexing or setting time.

LOCAL TIME

This mode displays the local time with hours, minutes and second.

When entering into the local time mode the hands display these following elements:

- 1 (center - short) displays hours, the hand moves forward of 1.5° every 6 minutes.
- 2 (center - medium) displays minutes, the hand moves forward of 2° every 20 seconds.
- 3 (center - large) displays seconds.
- 4 displays the first digit of the date.
- 5 displays the second digit of the date.

From this mode is possible to access two different sub functions:



- Hand's indexing: By pressing simultaneously the A and B pushers during more than two seconds.
- Local time setting mode: By pulling the crown (C-).

As previously defined the next mode, CHRONO 1/100 of second, is displayed by pressing the crown (C+).

After a reset, the displayed time is 00:00:00 with the date set to January 1, 2000.

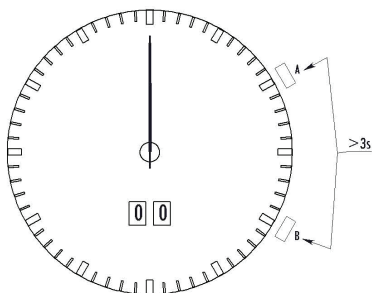


CALIBRATING

This mode is useful when you have a misalignment between the hands and the dial.

Watch needs to be in TIME mode in order to calibrate

After pressing simultaneously on the pushers A and B during more than two seconds, all hands go to their nominal position. If there is a misalignment between the hand and the wished index, the hands have to be indexed.



The nominal position is the following:

- Minute: Hand (1) pointing “12”
- Hour: Hand (2) pointing “12”
- Second: Hand (3) pointing “12”
- First Digit (4): Display “0”
- Second Digit (5): Display “0”

The indexation is performed as below:

- After the initialization at the position 0 of all hands, the user has the possibility to indexing the first hand.
- A long pressure on the pusher A (more than 2 seconds) allows a fast increment of the selected hand. This fast indexation happens clockwise for all hands.
- A short pressure on the pusher B changes the selected hour/disc.

- At any time during the indexation, it's possible to quit this mode by pressing the crown C+.

LOCAL TIME SETTING

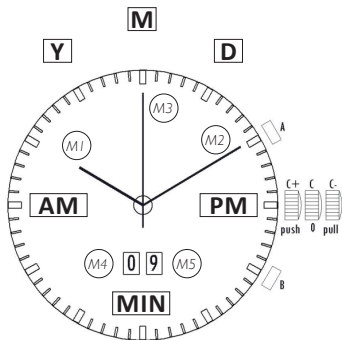
This mode allows setting the local time.

Description of the functionality:

- By pulling the crown C- from any city time mode, the user enters directly into the Time setting mode.
- Upon entry this mode, the hour hand can be set.
- A Short press on A forwards an hour hand step by step (respectively minute, year, month, and date for the other setting).
- Long press (>2s) on the A pusher forwards a fast increment of the setting.
- Pressing on B allows to move between hours/discs the next setting



- At any time and in all states, it's possible to quit the setting mode by releasing the crown back to neutral position *C0*.



Display:

- *M1* (center - short) displays the hours.
- *M2* (center - medium) displays the minutes.

- M3 (center- long) indicates the type of setting. Thereafter the position of the second's hand according the setting:
 - *Hour Setting* : 45' = AM, 15' = PM
 - *Minute Setting* : 30'
 - *Year Setting* : 55'
 - *Month Setting* : 00'
 - *Day Setting* : 05'
- M4 (7H30) displays the first digit of the date (respectively month, year) with an indication about AM/PM
- M5 (4H30) displays the second digit of the date (respectively month, year)



CHRONO

Hereafter the description of the chronograph 1/100 of second on 12 hours:

Descriptions of the functionality:

- Entry in this mode: By pressing the crown C+ twice from the time mode. There are three display possibilities :
 - Initialization: If the chrono isn't running or after a reset.
 - Running mode: If the chrono is running.
 - Stop mode: If the chrono was launched but not reset.
- With the Chrono mode set, a pressure on the pusher A starts running the Chrono mode.

- From the Running mode, there are two possibilities:
 - Pressing on A: Stop the chrono and display the measured time.
 - Pressing on B: Split the chrono and display the measured time, while the time is still running in background.
- From the Split mode, two possibilities are available to the user :
 - Pressing on B: Return on the Running mode and display the real value of the chrono and not the splitting value.
 - Pressing on A: Enter in the Split&Stop mode. That is that the chrono that was running is stopped but the display stay with the split value. A new pressure on B allows displaying the real time stopped.



- From the Stop mode, two possibilities are available for the user :
 - Pressing on *A*: Return at the Running mode
 - Pressing on *B*: Reset of the chrono, display 00:00:00:00
 - From all states: It's possible by pressing the crown *C+* twice to go to the next mode Time

Display:

- *M1* (center - short) displays the chrono hour.
- *M2* (center - medium) displays the chrono minute.
- *M3* (center - large) displays the chrono second.
- *M4* (7H30)
 - Displays "0" when the chrono is running.
 - Displays the tenth when the chrono isn't running (stop or split).



- M5 (4H30)
 - Displays "0" when the chrono is running.
 - Displays the hundredth when the chrono isn't running (stop or split).

The reset of the chrono is automatically performed after 11h 59min 59sec 00_{1/100}





www.gevrilgroup.com • 866-425-9882